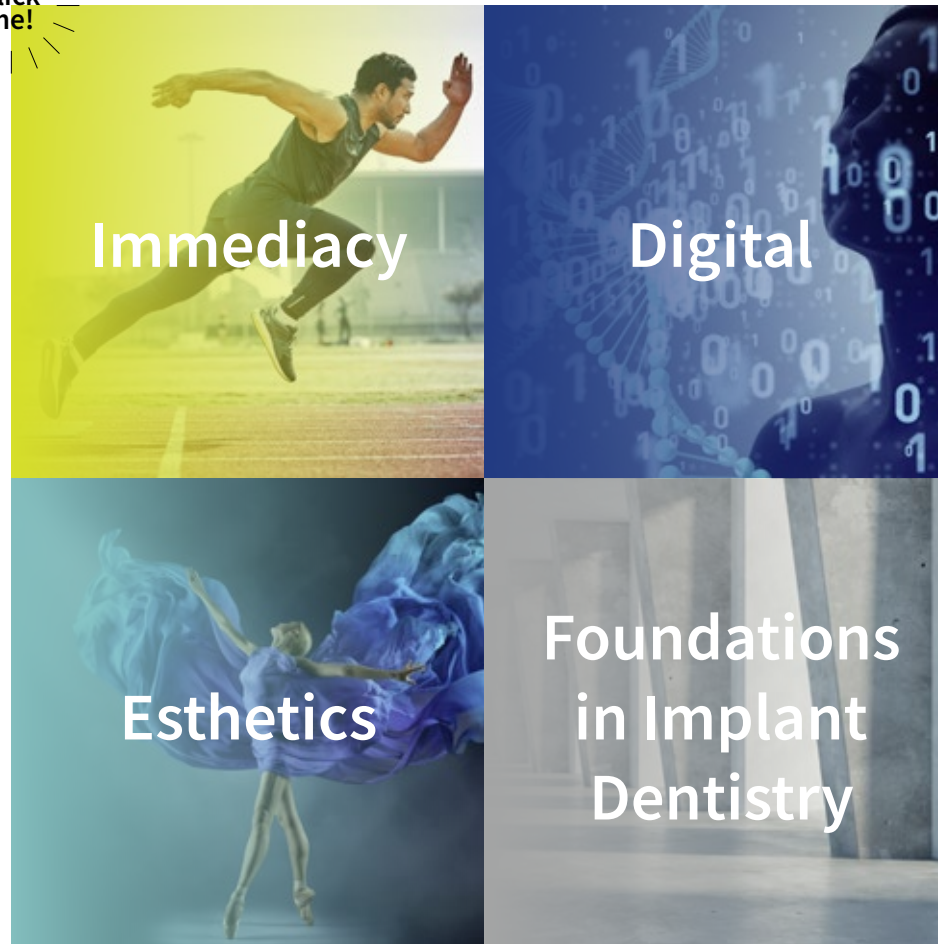


# International Team for Implantology

## Study Club in a Box



ITI Study Club in a Box

# Immediacy

Back to  home



# 1

## Immediate Implant Placement



Consensus Conference (2x)



Congress Lecture



Webinar



Clinical Case VIDEO (2x)



Clinical Case

# 2

## Immediate Implant Loading



Consensus Conference



Forum Implantologicum



Learning Module



Webinar



Clinical Case (3x)

# 3

## ITI Treatment Guide Vol. 14 Immediate Implant Placement and Loading



Clinical Case (6x)



Webinar



ITI Asks Why (2x)



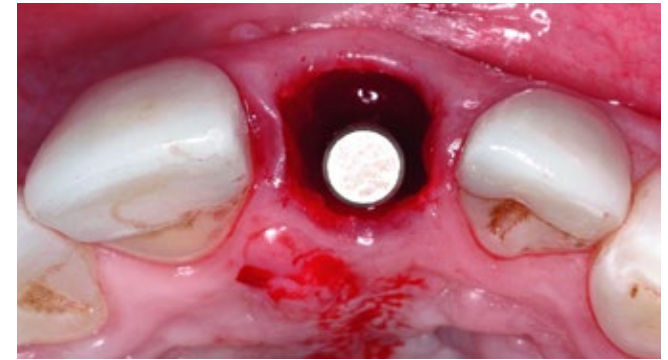
Consensus Conference



**READ  
NOW!**



# Immediate Implant Placement



Picture 1. Courtesy of Dr. Eduardo Lorenzana

1.	 Consensus Conference	<a href="#">Implants in Post-Extraction Sites</a>	<a href="#">Stephen T Chen</a>	6 min read
2.	 Consensus Conference	<a href="#">Esthetic Outcomes following Immediate and Early Implant Placement in the Anterior Maxilla</a>	<a href="#">Stephen T Chen</a>	3 min read
3.	 Congress Lecture	<a href="#">Post-Extraction Ridge Alteration – A Risk for Esthetics</a>	<a href="#">Stephen T Chen</a>	28 min
4.	 Webinar	<a href="#">Post-Extraction Implant Placement: When Immediate, When Early and When Late?</a>	<a href="#">Stephen T Chen</a>	58 min
5.	 Clinical Case VIDEO	<a href="#">Immediate Implant Placement – Immediate Temporary Guided Surgery in the Aesthetic Zone</a>	<a href="#">Nikos Mattheos</a>	14 min
6.	 Clinical Case VIDEO	<a href="#">Immediate Implant Placement with Simultaneous Bone and Soft Tissue Augmentation Using Bone and Soft Tissue Substitutes</a>	<a href="#">Algirdas Puisys</a>	15 min
7.	 Clinical Case	<a href="#">Replacing Four Upper Incisors with a Screw-Retained Bridge on Two Implants</a>	<a href="#">Krzysztof Chmielewski</a>	9 min

# Immediate Implant Loading



Picture 2. Courtesy of Dr. Adam Hamilton

1.	 Consensus Conference	<a href="#"><u>Immediate Loading vs. Early/Conventional Loading of Immediately Placed Implants in Partially Edentulous Patients from the Patients' Perspective</u></a>	<a href="#"><u>Guy Huynh-Ba</u></a> <a href="#"><u>Thomas Oates</u></a>	2 min read
2.	 Forum Implantologicum	<a href="#"><u>Early Implant Placement Following Single Tooth Extraction in the Esthetic Zone with Contour Augmentation – Selection Criteria, Surgical Procedures and Long-Term Results</u></a>	<a href="#"><u>Daniel Buser</u></a> <a href="#"><u>Vivianne Chappuis</u></a> <a href="#"><u>Simone F. M. Janner</u></a> <a href="#"><u>Urs Belser</u></a>	26 min read
3.	 Learning Module	<a href="#"><u>Immediate Restoration and Loading</u></a>	<a href="#"><u>Diego Bechelli</u></a>	36 min
4.	 Webinar	<a href="#"><u>Implant Placement and Loading Protocols in Partially Edentulous Patients: Findings from the 6th ITI Consensus Conference</u></a>	<a href="#"><u>Adam Hamilton</u></a>	1 h 14 min
5.	 Clinical Case	<a href="#"><u>Immediate Loading of an Anterior Implant with a Prefabricated Crown</u></a>	<a href="#"><u>Adam Hamilton</u></a>	9 min
6.	 Clinical Case	<a href="#"><u>Replacing Four Upper Incisors with a Screw-Retained Bridge on Two Implants</u></a>	<a href="#"><u>Krzysztof Chmielewski</u></a>	9 min
7.	 Clinical Case	<a href="#"><u>Replacing Three Mandibular Posterior Teeth with an Immediately Loaded Fixed Dental Prosthesis</u></a>	<a href="#"><u>Wiebe Derksen</u></a>	9 min

# ITI Treatment Guide Vol. 14



Picture 2. Courtesy of Dr. Adam Hamilton

1.	 Clinical Case	<a href="#"><u>Immediate Implant Placement and Immediate Provisionalization with a Prefabricated-Shell Provisional Crown</u></a>	<a href="#"><u>Arndt Happe</u></a>	15 min
2.	 Clinical Case	<a href="#"><u>Immediate Implant Placement to Replace a Fractured Central Incisor in a Young Patient and Management of Long Term Implant Infraposition</u></a>	<a href="#"><u>Amélie Mainjot</u></a> <a href="#"><u>France Lambert</u></a>	15 min
3.	 Clinical Case	<a href="#"><u>Immediate Implant Placement with Static Computer-Aided Implant Surgery and Immediate Loading in the Esthetic Zone with Prefabricated CAD/CAM Provisional Implant Restorations</u></a>	<a href="#"><u>Alejandro Lanis</u></a> <a href="#"><u>Luiz Henrique Gonzaga</u></a> <a href="#"><u>Adam Hamilton</u></a>	15 min
4.	 Clinical Case	<a href="#"><u>Replacement of a Maxillary Left Canine with a Cemented Crown on an Immediately Placed Bone-Level Tapered Implant Using a One-Abutment, One-Time Approach</u></a>	<a href="#"><u>Krzysztof Chmielewski</u></a> <a href="#"><u>Björn Roland</u></a>	15 min
5.	 Clinical Case	<a href="#"><u>Guided Immediate Placement of a Ceramic Implant in a Maxillary Right Second Premolar and Immediate Restoration with a CAD/CAM-Fabricated Provisional Crow</u></a>	<a href="#"><u>Andre Chen</u></a>	15 min
6.	 Clinical Case	<a href="#"><u>Replacement of an Endodontically Compromised Mandibular Left First Molar with Immediate Implant Placement and a Sealing Socket Abutment (SSA)</u></a>	<a href="#"><u>Gary Finelle</u></a>	15 min

Immediacy BOX 3

Back to  home

# ITI Treatment Guide Vol. 14



Picture 2. Courtesy of Dr. Adam Hamilton

7.		Webinar	<a href="#">Decision-making for Immediate Implants</a>	<a href="#">France Lambert</a>	1 h 7 min
8.		ITI Asks Why	<a href="#">Replacement of a Maxillary Left Canine with a Cemented Crown on an Immediately Placed Bone-Level Tapered Implant Using a One-Abutment, One-Time Approach</a>	<a href="#">Krzysztof Chmielewski</a> <a href="#">Anthony John Dickinson</a>	37 min
9.		ITI Asks Why	<a href="#">Immediate Implant Placement with Static Computer-Aided Implant Surgery and Immediate Loading in the Aesthetic Zone with Prefabricated CAD/CAM Provisional Implant Restorations</a>	<a href="#">Alejandro Lanis</a> <a href="#">Anthony John Dickinson</a>	43 min
10.		Consensus Conference	<a href="#">Clinical Performance of Immediately Placed and Immediately Loaded Single Implants in the Esthetic Zone</a>		11 min
11.		Consensus Conference	<a href="#">Selection Criteria for Immediate Implant Placement and Immediate Loading for Single Tooth Replacement in the Maxillary Esthetic Zone</a>		14 min



# Digital

## 1

### Digital Impression and Digital Treatment Planning



Consensus Conference



Forum Implantologicum



Congress Lecture



Clinical Case



Clinical Case VIDEO (2x)

## 2

### Digital Implant Prosthodontics



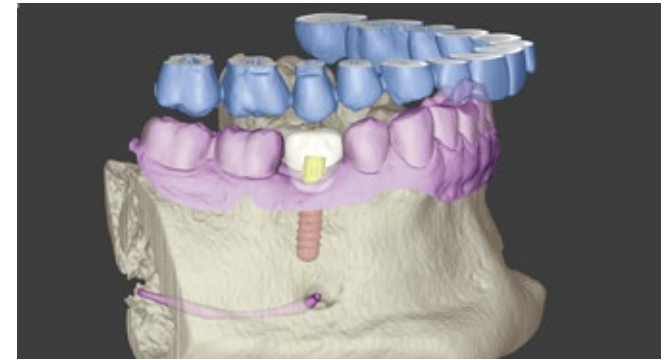
Forum Implantologicum (3x)



Webinar (2x)



# Digital Impression and Digital Treatment Planning



Picture 3. Courtesy of Dr. Tim Joda

1.		Consensus Conference	<a href="#"><u>Accuracy of Different Dental Impression Techniques for Implant-Supported Dental Prostheses</u></a>	<a href="#"><u>Tabea Flügge</u></a> <a href="#"><u>Daniel Wismeijer</u></a> <a href="#"><u>Ping Wang</u></a>	2 min read
2.		Forum Implantologicum	<a href="#"><u>Pre-Operative Analysis and Treatment Planning in Digital Implant Dentistry</u></a>	<a href="#"><u>Florian Kernen</u></a> <a href="#"><u>Tabea Flügge</u></a>	16 min read
3.		Congress Lecture	<a href="#"><u>Digital Approach to Implant Dentistry</u></a>	<a href="#"><u>German Gallucci</u></a>	59 min
4.		Clinical Case	<a href="#"><u>Replacing a Mandibular Second Premolar with a Chairside-Fabricated Crown</u></a>	<a href="#"><u>Tim Joda</u></a>	9 min
5.		Clinical Case VIDEO	<a href="#"><u>Immediate Full-Arch Reconstruction Utilising a Comprehensive Guided Surgical and Restorative Protocol</u></a>	<a href="#"><u>Andrew Legg</u></a>	13 min
6.		Clinical Case VIDEO	<a href="#"><u>AI &amp; Digital Dentistry</u></a>	<a href="#"><u>Romain Doliveux</u></a>	20 min



# Digital Implant Prosthodontics



Picture 4. Courtesy of Dr. Tim Joda

1.		Forum Implantologicum	<a href="#"><u>Variables Affecting the Accuracy of Static Computer-Assisted Implant Surgery: Bridging the Gap Between Clinical Success and Broad Application</u></a>	<a href="#"><u>Karim El Kholy</u></a> <a href="#"><u>Simone F. M. Janner</u></a> <a href="#"><u>Ramona Buser</u></a> <a href="#"><u>Daniel Buser</u></a>	16 min read
2.		Forum Implantologicum	<a href="#"><u>Computer-Assisted Implant Surgery (CAIS) and Available Surgical Tools in Daily Practice: Clinical Experience</u></a>	<a href="#"><u>Ali Tahmaseb</u></a> <a href="#"><u>Jobine te Poel</u></a> <a href="#"><u>Daniel Wismeijer</u></a>	13 min read
3.		Forum Implantologicum	<a href="#"><u>Current State of CAD/CAM Technology in Implant Dentistry</u></a>	<a href="#"><u>Dean Morton</u></a> <a href="#"><u>Waldemar D. Polido</u></a> <a href="#"><u>Wei-Shao Lin</u></a>	10 min read
4.		Webinar	<a href="#"><u>Digitally assisted implant prosthodontics – all the tips and tricks you need to know</u></a>	<a href="#"><u>German Gallucci</u></a>	59 min
5.		Webinar	<a href="#"><u>Restorative Dentistry in Times of Digitalization</u></a>	<a href="#"><u>Irena Sailer</u></a>	57 min

# Esthetics

1

## Implant Placement & Restoration in the Esthetic Zone



Consensus Conference (3x)



Forum Implantologicum (2x)



Congress Lecture



Webinar



Clinical Case (2x)

2

## Soft Tissue Management in the Esthetic Zone



Consensus Conference (2x)



Clinical Case (2x)



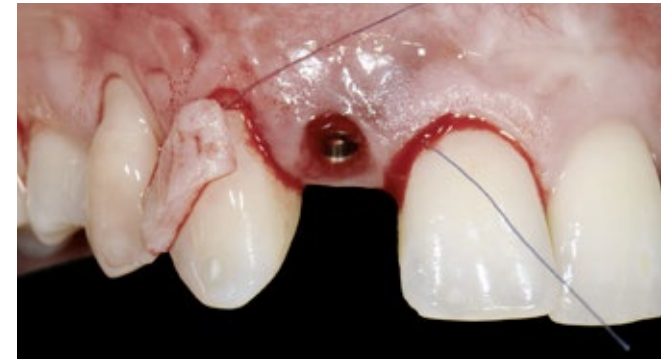
# Implant Placement & Restoration In The Esthetic Zone



Picture 5. Courtesy of Dr. Chatchai Kunavisarut

1.	 Consensus Conference	<a href="#">Influence of Restorative Procedures on Esthetic Outcomes</a>	<a href="#">William Martin</a> <a href="#">Adrien Pollini</a> <a href="#">Dean Morton</a>	2 min read
2.	 Consensus Conference	<a href="#">Esthetics in Implant Dentistry</a>		3 min read
3.	 Consensus Conference	<a href="#">Esthetic Outcomes following Immediate and Early Implant Placement in the Anterior Maxilla</a>	<a href="#">Stephen T Chen</a>	2 min read
4.	 Forum Implantologicum	<a href="#">The Benefits and Limitations of Zirconia as a Restorative Material for Fixed Restorations Supported by Dental Implants: A Current Status</a>	<a href="#">Laurent Marchand</a>	15 min read
5.	 Forum Implantologicum	<a href="#">Clinical Variables for Successful Esthetic Outcomes of Implant Prosthodontics</a>	<a href="#">Ignacio Pedrinaci</a> <a href="#">Elli Kotina</a> <a href="#">Neil Griseto</a> <a href="#">Adam Hamilton</a> <a href="#">German O. Gallucci</a>	9 min
6.	 Congress Lecture	<a href="#">Interdisciplinary Esthetic Approach</a>	<a href="#">Diego Bechelli</a>	15 min
7.	 Webinar	<a href="#">Esthetic Risk Assessment in Implant Dentistry in Partially Edentulous and Edentulous Patients</a>	<a href="#">William Christopher Martin</a>	1 h
8.	 Clinical Case	<a href="#">Replacement of an Upper Right Central Incisor with a Root Fracture, Early Placement of an RC Bone Level Implant, Variobase Abutment</a>	<a href="#">Chatchai Kunavisarut</a>	9 min
9.	 Clinical Case	<a href="#">Replacement of an Ankylosed Central Incisor with a Gingival Recession: Tooth Extraction with Socket Grafting and Late Implant Placement with Simultaneous Contour Augmentation</a>	<a href="#">Daniel Buser</a>	9 min

# Soft Tissue Management In The Esthetic Zone



Picture 6. Courtesy of Dr. Paolo Casentini

1.	 Consensus Conference	<a href="#"><u>Soft Tissue Augmentation Procedures for Mucosal Defects in the Esthetic Zone</u></a>	<a href="#"><u>Robert Alan Levine</u></a> <a href="#"><u>Guy Huynh-Ba</u></a> <a href="#"><u>David L Cochran</u></a>	2 min read
2.	 Consensus Conference	<a href="#"><u>Esthetic Outcomes following Immediate and Early Implant Placement in the Anterior Maxilla</u></a>	<a href="#"><u>Stephen T Chen</u></a> <a href="#"><u>Daniel Buser</u></a>	3 min read
3.	 Clinical Case	<a href="#"><u>Periodontal Plastic Surgery and Prosthetic Procedures to Treat Peri-Implant Soft-Tissue Dehiscences</u></a>	<a href="#"><u>Paolo Casentini</u></a>	15 min read
4.	 Clinical Case	<a href="#"><u>Early Implant Placement, Contour Augmentation, and Autologous Connective-Tissue Graft Using a Tunneling Technique to Replace an Upper Incisor with Generalized Gingival Recession</u></a>	<a href="#"><u>Eduardo R Lorenzana</u></a> <a href="#"><u>Jason Gillespie</u></a>	15 min read



ITI Study Club in a Box

Back to  home



# Foundations in Implant Dentistry

# 1

## Surgical Concepts



Learning Module (3x)



Congress Lecture

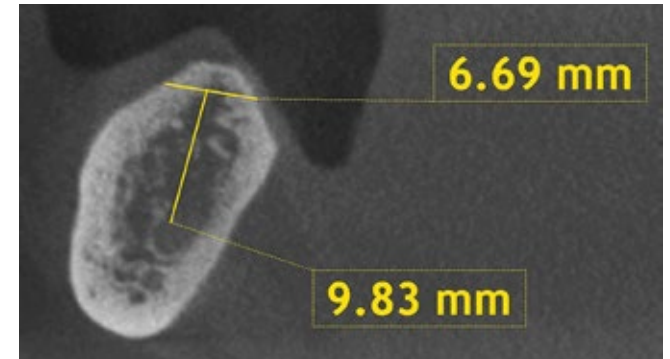


Clinical Case (2x)

Click  
me!



# Surgical Concepts



Picture 7. Courtesy of Dr. Paolo Casentini

1.		Learning Module	<a href="#">Flap Design</a>	<a href="#">Merete Aaboe</a>	21 min
2.		Learning Module	<a href="#">Flap Closure</a>	<a href="#">Aileen Bell</a>	32 min
3.		Learning Module	<a href="#">The SAC Classification</a>	<a href="#">Anthony S Dawson</a>	21 min
4.		Congress Lecture	<a href="#">Minimally Invasive Approach to Minimize Surgical Complications</a>	<a href="#">France Lambert</a>	30 min
5.		Clinical Case	<a href="#">Replacement of a Maxillary Left First Molar Using an Early Loading Protocol</a>	<a href="#">Daniel Buser</a>	9 min
6.		Clinical Case	<a href="#">Rehabilitation of a Mandibular Distal Extension Situation in a 89-year-old Patient with an Implant-supported Fixed Dental Prosthesis</a>	<a href="#">Daniel Buser</a>	9 min